



LOCKE & ENGLAND

AUCTIONEERS & VALUERS

MARCH SALE OF

Antique Furniture & Collectors' items Jewellery & Watches

VIEWING

Antique Furniture & Collectors' items,

Saturday 26th March – 10am - 2pm

Tuesday 29th March – 9am - 5pm

Wednesday 30th March – 9am - 7pm,

Morning of sale from 9am - 11am

A limited number of people will be permitted in the salerooms at any one time and strict social distancing measures will be in place.

AUCTION

**Antique Furniture & Collectors' items,
Jewellery & Watches**

Thursday 31st March 2022

Commencing at 11.00am

LIVE INTERNET BIDDING



CATALOGUES

£5 by post, online at

www.leauction.co.uk



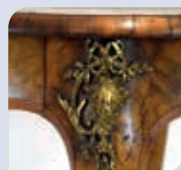
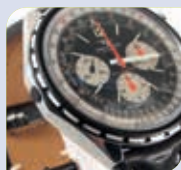
Valuation Day of Antiques, Jewellery and Collectables

VALUATIONS BY APPOINTMENT

Tuesday 29th March 2022

Commencing at 12:00pm - 4:00pm

**To book your 15-minute appointment slot in advance.
Contact the saleroom 01926 889 100 or email info@leauction.co.uk**



LOCKE & ENGLAND

AUCTIONEERS & VALUERS

Leamington Auction Centre

12 Guy St, Leamington Spa, CV32 4RT

info@leauction.co.uk 01926 889100

www.leauction.co.uk

*Furniture
and Clocks*



Furniture and Clocks

1

An 18th century oak press cupboard, the cornice over two paneled doors above the base with a bank of five drawers on bracket feet, h. 176 cm, w. 140 cm, d. 56 cm £200 - £300



Lot 2



Lot 1

2

A mid 19th century oak bookcase made by Kendal Bros. of Warwick for John Margetts of 32 High St. Warwick. The oak was grown on the estate of Sir Charles Mordant of Walton Hall, Wellesbourne, and the bookcase made to fit a recess in John Margetts breakfast room. The carved wreath was carved by Thomas Kendall (1837-1905) for his friend. The bookcase was then auctioned in 1905 and was purchased by the granddaughter. Along with associated paperwork, h. 214 cm, l. 189 cm, d. 65 cm £600 - £800

3

An 18th century style oak dresser, the plate rack over the base with three drawers on turned legs, h. 216 cm, w. 220 cm, d. 47 cm £200 - £300



Lot 3

4

An 18th century oak mule chest, the top lifting to reveal a vacant interior with candle box over two drawers on bracket feet, h. 72 cm, w. 119 cm, d. 57 cm £100 - £150

5

An 18th century oak single drawer side table, the moulded top on turned legs, h. 74 cm, w. 77 cm, d. 51 cm £100 - £150

6

An 18th century oak chest of two short over three long drawers on bracket feet, h. 103 cm, w. 96 cm, d. 53 cm £100 - £150

7

An early 18th century oak wall hanging corner cupboard, the single arch top field panel door enclosing fixed shelving, h. 92 cm, w. 64 cm £40 - £60



Lot 6

8

An 18th century oak bureau, the fall front revealing a fitted interior over three long drawers on bracket feet, h. 98 cm, w. 98 cm, d. 52 cm

£80 - £120



Lot 9

9

An early 18th century oak coffer, the three panel top over the three panel front with later applied panel bearing the initials T.W., h. 62 cm, w. 117 cm, d. 50 cm

£80 - £120

10

An early 18th century and later oak gateleg table, the later oval top supported on two single gate actions, on turned legs, h. 73 cm, w. 107 cm, d. 68 cm

£50 - £80

11

An 18th century oak, ebony strung and banded wall hanging corner cupboard, h. 102 cm, w. 86 cm

£40 - £60

12

An early 19th century oak tilt top table, the moulded top over a turned column and three legs, h. 70 cm, dia. 53 cm

£50 - £80



Lot 15

13

A late 18th / early 19th century oak, ebony and mahogany bookcase, the cavetto cornice over two panel doors enclosing adjustable shelving above the base with a brushing slide, two short and three long drawers on bracket feet, h. 217 cm, w. 101 cm, d. 52 cm

£150 - £250



14

A 19th century French chestnut four poster bed with carved footboard panel and siderails, along with base and horsehair mattress, h. 211 cm, l. 186 cm, w. 130 cm

£100 - £200

15

An 18th century French chestnut chest, the top lifting to reveal a vacant interior, h. 52 cm, w. 80 cm, d. 50 cm

£80 - £120



Lot 16

16

An Arts and Crafts oak and parquetry banded occasional table, the hexagonal top on a stop chamfered column and three faceted swept legs, h. 71 cm, dia. 60 cm *£60 - £80*

17

An early 20th century oak sectional bookcase, the top section with carved gallery over two glazed bookcase sections on the base with drawer, h. 109 cm, w. 87 cm, d. 36 cm *£120 - £180*

18

A late 17th century and later oak and elm side table, the top over turned legs joined by stretchers, h. 71 cm, w. 92 cm, d. 54 cm *£80 - £120*



Lot 20

19

An early 18th century and later oak dining table, the three plank cleated top on shaped slab end supports with pierced heart design joined by a later stop chamfered stretcher, h. 75 cm, l. 189 cm, d. 80 *£200 - £300*

20

A 19th century oak and brass bound coopered oval barrel, h. 60 cm *£40 - £60*

21

An early 19th century mahogany cabinet, the top over single drawer above two arch panel cupboard doors flanked by turned columns enclosing a slide and two short drawers on moulded swept feet, h. 104 cm, w. 107 cm, d. 50 *£150 - £250*



22

A 19th century French mahogany and white marble chest of two short over three long drawers on bun feet, h. 100 cm, w. 115 cm, d. 53 cm *£100 - £150*



23

An Edwardian rosewood, boxwood strung and marquetry open arm chair upholstered in a patterned white gold fabric on turned front legs, h. 89 cm, w. 65 cm, d. 68 cm *£80 - £120*



Lot 24

24

A handwoven Persian rug, the multi line border surrounding a red ground field with arabesque detail and central medallion, 199 cm x 130 cm *£70 - £100*

25

A late 19th century walnut sideboard by Gillows of Lancaster, the bevelled mirrored back over three drawers open storage and glazed cupboards, stamped to drawer, h. 187 cm, w. 168 cm, d. 40 cm *£200 - £300*

26

A 19th century mahogany chest of two short over three long drawers on squat bun feet, h. 107 cm, w. 106 cm, d. 52 cm *£80 - £120*



Lot 27

27

A pair of Edwardian style mahogany, marquetry and tulipwood banded lamp tables, the shaped top over single drawer on a four column pedestal on four swept legs, h. 71 cm, w. 55 cm, d. 55 cm *£150 - £250*





28

A Georgian mahogany and parcel gilt fretwork mirror, the beveled plate surrounded by the moulded frame, h. 96 cm, w. 51 cm

£80 - £120

29

An Edwardian walnut occasional table, the octagonal top on turned legs joined by pierced galleried stretchers, h. 72 cm, dia. 64 cm

£40 - £60

Lot 28

30

An early 19th century mahogany chest of two short over three long drawers over shaped apron, h. 104 cm, w. 106 cm, d. 50 cm

£80 - £120

31

An early 19th century mahogany, boxwood strung and ebony banded tea table, the fold over top supported on a double gate action above square section tapering legs, h. 74 cm, w. 92 cm, d. 49 cm

£60 - £100



Lot 34

32

A Regency mahogany and boxwood strung toilet mirror, the plate supported on turned uprights terminating in ebonized sphere finials over the base with three drawers on ball feet, h. 57 cm, w. 59 cm, d. 24 cm

£70 - £100



33

An Edwardian rosewood, boxwood strung and marquetry cabinet, the top with two blind panel doors enclosing a fitted interior of drawers surrounding a central cabinet over the base with fitted single drawer on square section tapering legs, h. 145 cm, w. 78 cm, d. 46 cm

£200 - £300

34

A 19th century mahogany side table, the top over three drawers on turned and reeded legs terminating in brass cup castors, h. 78 cm, w. 113 cm, 51 cm

£60 - £100



Lot 35

35

A 19th century flame mahogany chest of two short over three long drawers on turned feet, h. 105 cm, w. 114 cm, d. 54 cm £80 - £120



Lot 36

36

A mid 18th century mahogany chest on chest, the dental cornice over blind fret entablature, two short and three long drawers on the base with brushing slide and three long drawers on bracket feet, h. 185 cm, w. 109 cm, d. 52 cm £400 - £600

37

An Edwardian walnut secretaire bookcase, the swan neck pediment over two astragal glazed doors above the secretaire drawer and two carved panel cupboard doors, h. 227 cm, w. 120 cm, d. 46 cm £100 - £150



Lot 37

38

A late Victorian burr walnut, boxwood strung and marquetry breakfast table, the quarter veneered oval tilt top on a four column pedestal over four carved C-scroll legs, h. 72 cm, w. 137 cm, d. 103 cm *£100 - £200*

39

An early 19th century mahogany bow front chest of two short over three long drawers on splay feet, h. 106 cm, w. 108 cm, d. 57 cm *£100 - £150*

40

An early 20th century walnut arm chair upholstered in a button back white gold fabric on turned front legs, h. 86 cm, w. 74 cm, d. 94 cm *£70 - £100*



43

A 19th century Anglo Indian teak dining table, the carved oval top on four carved legs, h. 76 cm, w. 163 cm, d. 126 cm *£100 - £150*

44

A late 18th century mahogany and rosewood banded tea table, the fold over top supported on a single gate action over square section tapering legs, h. 76 cm, w. 91 cm, d. 45 cm *£50 - £80*

45

A 19th century mahogany framed nursing chair upholstered in a button back dusty pink fabric on moulded cabriole legs, h. 110 cm, w. 66 cm, d. 76 cm *£40 - £60*

46

A late 18th century mahogany secretaire chest of drawers, the secretaire drawer with fitted interior over three long drawers on turned feet, h. 111 cm, w. 122 cm, d. 55 cm *£200 - £300*



Lot 41

41

A 19th century mahogany chest of three long drawers with brass carry handles on bracket feet, h. 93 cm, w. 76 cm, d. 47 cm *£150 - £250*

42

A handwoven Persian rug, the multi line border surrounding the blue ground field with superimposed central medallions, 374 cm x 281 cm *£150 - £250*

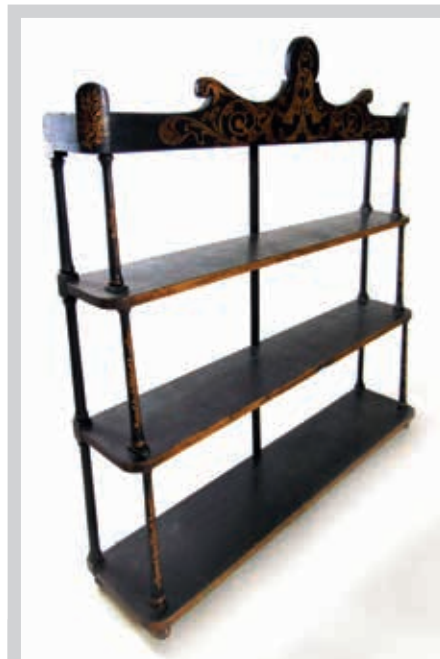


Lot 46 (detail)

47

A Regency secretaire bookcase. The pediment over two glazed doors on the base with secretaire drawer above two cupboard doors on turned feet, h. 218 cm, w. 99 cm, d. 54 cm

£100 - £200



48

A set of Regency black and parcel gilt wall shelves, the three graduated tiers separated by turned supports, h. 94 cm, w. 93 cm, d. 20 cm

£80 - £120

49

A 19th century wrought iron, oak and brass lectern, the brass book rest on the oak rail over the black and gold painted sides, h. 129 cm, w. 106 cm, d. 45 cm

£150 - £250



Lot 50

50

A Georgian mahogany, satinwood and penwork galleried tray with brass carry handles, w. 72 cm, d. 49 cm

£50 - £80

51

A late 19th century walnut breakfast table, the quarter veneered oval tilt top on a carved column and three carved legs, h. 74 cm, w. 135 cm, d. 99 cm

£40 - £60

52

A 19th century mahogany open arm chair upholstered in a pink button back fabric, on turned front legs, 93 cm, w. 70 cm, d. 95 cm

£80 - £120

53

An Edwardian mahogany, satinwood banded, boxwood strung and marquetry side board, the multilevel top over two drawers and two cupboard doors flanking open shelves on square tapering legs, h. 129 cm, l. 153 cm, d. 35 cm

£80 - £120



Lot 49

54

An early 20th century chesterfield sofa upholstered in a olive green button back fabric on turned walnut front legs, h. 71 cm, l. 220 cm, d. 88 cm *£100 - £200*



55

A late 18th century mahogany and boxwood strung chest of two short over three long drawers on turned feet, h. 114 cm, w. 118 cm, d. 53 cm *£80 - £120*

56

An Edwardian burr walnut breakfast table, the quarter veneered oval tilt top on a four column pedestal over four carved legs, h. 71 cm, w. 120 cm, d. 86 cm *£100 - £150*



Lot 57

57

An early 20th century Japanese carved miniature table desk, the top over long drawer above open asymmetrical shelves flanked by a cupboard and drawers on plinth base, h. 32.5, w. 64 cm, d. 27 cm *£150 - £250*



Lot 59



Lot 58

58

A 19th century cast iron garden urn, the egg and dart rim over the gadrooned body on a square plinth, h. 39 cm, dia. 54 cm *£80 - £120*

59

An Art Deco walnut display cabinet, the circular body with two glazed doors on splay base, h. 120 cm, w. 107 cm, d. 30 cm *£100 - £150*

60

A 19th century mahogany chest of four long drawers on turned feet, h. 99 cm, w. 106 cm, d. 52 cm *£70 - £100*

61

A late 19th century aesthetic movement ebony and parcel gilt bookcase, the top with two astragal glazed doors on the galleried breakfront base with glazed doors, h. 251 cm, w. 232 cm, d. 45 cm £200 - £300



62

A large Persian rug, the multi line border surrounding the field with floral rectangles, 300 cm x 400 cm £200 - £300

63

An early 20th century mahogany framed three piece suite, comprising of two arm chairs and a three seat settee upholstered in a blue fabric, (settee h. 80 cm, l. 166 cm, d. 100 cm

£100 - £200

64

A 19th century Irish rosewood side table, the kidney shaped top over the carved and moulded end supports joined by a turned stretcher, paper label under top 'Robert Strahan, Dublin' h. 72 cm, w. 104 cm, d. 49 cm £80 - £120



Lot 65

65

A late 18th century mahogany and parquetry strung chest of two short over three long drawers on bracket feet, h. 122 cm, w. 123 cm, d. 52 cm £80 - £120

66

A Edwardian mahogany and boxwood strung four fold screen, the glazed top section over a floral fabric panel, h. 178 cm, max l. 180 cm

£50 - £80



Lot 64



Lot 68



Lot 71 (detail)



Lot 67

67

An early 20th century pine, ply and metal bound travelling trunk, the baize lined interior with two fitted trays, label inside 'The Marshall Improved Air & Water-tight Chest', h. 57 cm, w. 87 cm, d. 54 cm

£80 - £120

68

A 19th century mahogany breakfast table, the tilt top over a turned column, platform base and dolphin carved feet, h. 73 cm, w. 107 cm, d. 95 cm

£60 - £100

69

A 19th century mahogany three door breakfront wardrobe, the mirrored center door enclosing hanging space and shelves flanked by two blind panel doors enclosing hanging space and drawer to base, h. 207 cm, l. 197 cm, d. 71 cm

£200 - £300

70

A 19th century possibly Irish pine dresser, the plate rack with carved and pierced surround over the base with two drawers over a shaped apron and legs, h. 215 cm, w. 163 cm, d. 47 cm

£150 - £250

71

A pine and walnut dresser base, the one piece top with gallery over seven drawers surrounding a cupboard door on turned feet, h. 92 cm, l. 189 cm, d. 53 cm

£200 - £300

72

An early 20th century pitch pine teachers desk along with associated beech and elm high chair, (desk h. 106 cm, w. 61 cm, d. 53 cm) £80 - £120



Lot 72 (detail)

73

A 19th century French carved oak pot cupboard, the veined red marble top over single drawer and romaine head cupboard door on turned legs and under tier, h. 83 cm, w. 40 cm, d. 35 cm £70 - £100

74

An early 20th century oak sectional bookcase by Gunn, comprising of cornice section, three glazed sections and base section with drawer, h. 133 cm, w. 87 cm, d. 36 cm £150 - £200



Lot 79

75

An early 20th century oak chapel chair with a carved memorial plaque to the back, h. 82 cm, w. 69 cm, d. 45 cm £80 - £120

76

A 19th century and later case iron folding garden bench with later weathered teak slats, h. 76 cm, w. 112 cm, d. 42 cm £80 - £120

77

A 19th century mahogany chest of two short over three long drawers, with turned knobs and squat bun feet, h. 114 cm, w. 121 cm, d. 54 cm £80 - £120

78

18th and 19th century brass fire place furniture, including fender with uprights, fire irons, one fire dog and a log bin £80 - £120

79

An early 20th century oak open arm chair in the Howard style, upholstered in a beige leatherette fabric on turned front legs on ceramic castors, h. 84 cm, w. 74 cm, d. 95 cm £100 - £200

80

A 19th century mahogany drop leaf table, the top on turned legs terminating in brass castors stamped 'Cope's Patent Strong', h. 74.5 cm, w. 138 cm, d. 108 cm £50 - £80

Lot 76



81 - 89

Spare Lots

90

An 18th century oak and boxwood inlaid long case clock, the engraved brass face with Roman and Arabic numerals, pierced hands, date aperture and a thirty hour movement, signed Griff Williams of Newport, h. 208 cm, w. 42 cm, d. 26 cm

£100 - £200

91

A 19th century mahogany long case clock time piece (no movement, changed to quartz movement), the enameled face with moon phase dial over Roman numerals, pierced hands, painted spandrels and second dial, indistinctly signed, h. 237 cm, w. 64 cm, d. 26 cm

£150 - £250



Lot 92

92

An Edwardian mahogany and strung mantle clock, the waisted side case housing the enameled face with Roman numerals behind convex glass, h. 30 cm

£40 - £60

93

An early 20th century French veined pink marble and brass mounted clock garniture, h. 38 cm

£80 - £120



Lot 101



Lot 100

94

A 19th century mahogany banjo barometer signed G. Cassera of Stourbridge, h. 98 cm

£50 - £80

100

A Regency mahogany and boxwood banded tea caddy of sarcophagus form, with single compartment next to mixing bowl well on brass ball feet, h. 16 cm, w. 24 cm, d. 14 cm

£60 - £80

101

A Regency rosewood tea caddy, the interior with two tea compartments flanking a mixing bowl on carved bun feet, h. 19.5 cm, w. 38 cm, d. 18 cm

£80 - £120

102

An early 19th century mahogany and brass mounted writing slope, the top with inlaid brass plaque engraved B.F. Allen over a Brahma lock. Slope locked so interior unknown, h. 20 cm, w. 50 cm, d. 28 cm

£50 - £80

103 - 149

Spare Lots

Lot 91





SOUTHAMS
Sporting Guns & Antique Arms

The Summer Sales of
Sporting Guns & Antique Arms
9th - 11th June 2022

T: 01234 269 082 E: guns@southamsauction.co.uk

Consignments Invited

www.southamsauction.co.uk

ALL ENQUIRIES

Southams Auctioneers 24 Newnham Street, Bedford, Bedfordshire MK40 3JR

T: +44 (0) 1234 269 082 E: guns@southamsauction.co.uk W: www.southamsauction.co.uk

Pictures & Prints



Pictures and Maps



Lot 150

150

Henry Samuel Merritt (British 1884-1963)
Cornish village scene
signed H.S. Merrett
watercolour
24 cm x 35 cm

£30 - £50

151

Phillip Rickman (British 1891-1982)
two ducks on a lake
signed and dated 1977
watercolour
19.5 cm x 30.5 cm

£80 - £120

152

attributed to John Copley (British 1875-1950)
stretching gentlemen
unsigned pencil and charcoal on paper
28 cm x 34 cm

£100 - £150

153

Charles William Adderton (British 1866-1944)
fishing boats on the shore
signed C.W.Adderton
watercolour
31 cm x 46 cm

£80 - £120

154

Elizabeth Sorrell (British 1916 -1991)
study of dolls
signed and dated 1982
watercolour
54 cm x 37 cm

£40 - £60

155

Graham Williams
(British fl.1910-1945, aka Francis Jamieson)
Highlands scene
signed Graham Williams
oil on canvas
39 cm x 59 cm

£150 - £250



156

Gwilym Prichard
(Welsh 1931-2015)
mountain landscape
signed
watercolour
53 cm x 73 cm

£300 - £400

157

Frederick William Newton
Whitehead
(British 1853-1938)
washerwoman by river
signed
oil on canvas laid on board
22 cm x 39 cm

£400 - £600

Lot 152



Lot 156



Lot 157



158

attributed to Alfred
Wolmark
(1877-1961)
still life initialed and
dated '53
oil on board
50 cm x 34 cm
£1000 - £1500

159

Terence Alexander (British 20th
century)
pair of still life's
signed
oil on boards
23 cm x 18 cm *£80 - £120*

160

Arthur Wardle (British 1864-1949)
'Home On Leave'
signed
oil on canvas
80 cm x 64.5 cm *£2000 - £3000*

161

Attributed to Percy Tarrant
(British 1855-1934)
carol singers
unsigned
oil on canvas
33.5 cm x 44 cm *£200 - £300*

162

Albert Williams (British b.1922)
Christmas still life
signed
oil on board
40.5 cm x 50.5 cm *£200 - £300*



Lot 162



Lot 160



Lot 163

163

John F. Smith (British b.1934)

still-life of fruit

signed

oil on board

29 cm x 39 cm

John Smith was employed by Royal Worcester
as a fruit painter from 1950-1971 £100 - £150



Lot 164

164

John F. Smith (British b.1934)

still-life of fruit

signed

oil on board

19 cm x 29 cm

John Smith was employed by Royal Worcester
as a fruit painter between 1950-1971

£100 - £150



Lot 165

165

In the manner of David Bates
a lake side landscape
signed
oil on canvas
82 cm x 112 cm

£150 - £250

166

After Cecil Aldin
post carriage and horses
print
37 cm x 97 cm

£50 - £80



Lot 167

167

Namerredje (Aboriginal, Australia)
Rock Kangaroo painting on wooden board, 26 cm x 69 cm

£150 - £250



168

Yuwan Yuwan (Aboriginal, Australia)
Wolerrk the Kangaroo
unsigned
painting on board
37 cm x 67 cm

£200 - £300



Lot 169

169

Bernie Moore
two nurses
signed
oil on canvass
70 cm x 99 cm

£50 - £80

170

Chinese late 19th century
members of the imperial court
reverse painted on glass
46 cm x 29 cm

£100 - £200



Lot 170 (one of a pair)

171

Tibor Reich (1916-1996)
'A Tournament'
design No.322
screen print on fabric
58 cm x 122 cm

£80 - £120

172

Tibor Reich (1916-1996)
William Shakespeare and David Garrick
screen prints on fabric
66 cm x 57 cm

*£80 - £120***173**

man's midriff print
59 cm x 84 cm

*£60 - £100***174 - 199**

Spare Lots

HAMMER PRICES - JANUARY 2022

1	£850	33	£180	65	£420	175	£45	320	£140	424	£280	455	£180
2	£190	35	£190	66	£200	176	£60	321	£70	425	£280	456	£50
3	£120	36	£50	67	£85	200	£400	322	£120	426	£300	457	£60
4	£180	37	£150	68	£150	201	£150	323	£55	427	£240	458	£75
5	£260	38	£50	69	£70	202	£400	325	£100	428	£260	459	£175
6	£80	39	£75	70	£500	203	£200	326	£100	429	£220	460	£60
7	£150	40	£75	71	£85	204	£50	327	£110	430	£150	461	£240
8	£80	41	£170	72	£130	205	£220	328	£280	431	£230	462	£140
9	£100	42	£160	73	£40	206	£65	400	£340	432	£240	463	£110
11	£240	43	£80	74	£50	207	£110	401	£120	433	£85	464	£20
12	£200	44	£380	75	£80	208	£50	402	£50	434	£180	465	£90
13	£130	45	£45	77	£30	209	£120	403	£130	435	£75	466	£170
14	£40	46	£400	100	£40	210	£100	404	£65	436	£120	467	£60
15	£220	47	£80	101	£220	211	£85	405	£60	437	£50	468	£750
16	£190	48	£320	102	£220	300	£140	406	£55	438	£220	469	£190
17	£240	49	£320	103	£160	304	£100	407	£80	439	£320	470	£80
18	£800	50	£95	104	£45	305	£100	408	£70	440	£65	471	£45
19	£70	51	£550	151	£150	306	£650	409	£130	441	£100	472	£85
20	£1000	52	£240	152	£85	307	£420	410	£130	442	£70	473	£120
21	£200	53	£300	153	£30	308	£50	411	£120	443	£50	474	£26
22	£110	54	£110	154	£550	309	£1800	412	£120	444	£55	475	£30
23	£180	55	£60	155	£200	310	£850	413	£75	445	£35	476	£740
24	£260	56	£300	157	£400	311	£100	414	£65	446	£70	477	£200
25	£300	57	£200	159	£100	312	£45	415	£80	447	£120	478	£360
26	£220	58	£50	160	£180	313	£60	416	£90	448	£70	479	£400
27	£24	59	£700	161	£50	314	£360	417	£50	449	£120		
28	£70	60	£400	163	£60	315	£160	418	£190	450	£220		
29	£50	61	£300	164	£150	316	£180	419	£450	451	£65		
30	£140	62	£420	171	£30	317	£200	420	£140	452	£50		
31	£420	63	£130	172	£700	318	£80	421	£150	453	£30		
32	£65	64	£40	174	£80	319	£900	422	£45	454	£70		

VALUATION DAY - ENTRIES INVITED

Antique Furniture and Collectors' Items & Jewellery

Tuesday 29th March 2022 - Leamington Spa Auction Centre

*Ceramics & Glass,
Works of Art*



Ceramics, Glass and Works of Art & Toys



Lot 200

200

A 19th century Chinese famille rose bottle vase, the body decorated with panels depicting figures, flora and fauna, h. 34 cm £100 - £200



201

A pair of late 19th/early 20th century Chinese ceramic brush pots decorated with foo dogs and calligraphy, together with a similar pot, h. 12 cm £80 - £120

202

A Sampson of Paris porcelain bowl decorated with coat of arms, flowers and raised motifs, dia. 25 cm £40 - £60

203

A set of four late 19th century Minton cabinet plates, the central floral decoration surrounded by blue and gilt borders, dia. 23.5 cm £40 - £60

204

A Spode Felspar porcelain urn having encrusted floral decoration and an openwork finial, h. 35 cm £60 - £80

205

A large Majolica charger relief decorated with a dragon and griffin perched on an armorial shield, dia. 50 cm £80 - £120



Lot 205



Lot 206

206

A William Moorcroft vase decorated in the Clematis pattern on a blue ground, h. 13 cm
£50 - £80

207

A Royal Crown Derby imari pattern vase having a piecrust rim, together with a hexagonal jar and a small vase, h. 12 cm
£50 - £80



208

A Christofle 'Torsade Bleu' part dinner service to include dinner plates, side plates, tureens, cups, saucers and associated chargers etc.
£500 - £800



209

A pair of Moorcroft possibly lily pattern cream ground table lamps with shades, h. (with shades) 58 cm
£150 - £200

210

A pair of Moorcroft 'Modern' pattern table lamps with shades, h. (with shades) 54 cm
£150 - £200

211

A pair of Moorcroft 'hepatica' pattern cream ground table lamps with shades, h. (with shades) 55 cm
£100 - £150

212

A Moorcroft 'antheia' pattern cream ground table lamp with shade, h. 58 cm
£60 - £80

213

A Moorcroft vase in the Iris and spring flower pattern, h. 14.5 cm
£60 - £80

214 - 249

Spare Lots



Lot 213



Lot 250

250

A large Goldscheider ceramic model of Pekingese dog, h. 30 cm, l. 43 cm £100 - £200

251

Three Goldscheider ceramic models of Pekingese dogs, largest 23 cm long £80 - £120

252

An early 20th century Sevres ceramic model of a Pekingese dog, h. 15 cm £50 - £80



253

A Goebel ceramic model of a Pekingese dog along with two other models of dogs £40 - £60

254

A Goldscheider ceramic figural group of four Pekingese £50 - £80

255

A Royal Doulton ceramic decanter modeled as a Pekingese dog made for Erven Lucas Bols, h. 12.5 cm £80 - £120

256

Three ceramic models of Pekingese by Nymphenburg, largest 25 cm long £150 - £250



Lot 256

257

Three ceramic models of Pekingese dogs by
Dahl Jensen, Copenhagen, Denmark £40 - £60

258

A Royal Worcester figure 'Chinoiserie Girl' RW
3348, Modeled by Gwendolen Parnell,
h. 15.5 cm £30 - £40

259

A terracotta model of a
Pekingese dog signed
Bonome (Santiago
Rodriguez Bonome
1901-1995), h. 24.5 cm
£80 - £120



Lot 259

260

A Royal Crown derby condiment
set £50 - £80



Lot 261

263

A white metal French car mascot modeled as
a Pekingese along with a silver plated model of
a Pekingese (possibly a car mascot) £80 - £120

264

Two spelter models of Pekingese dogs
£70 - £100

265

Two cold painted bronze models of Pekingese
dogs along with four white metal models
£50 - £80

261

A spelter ink well modeled as a Pekingese dog,
h. 8.5 cm £30 - £40

262

A jade Pekingese dog, l. 5 cm £30 - £40



Lot 263

266

An onyx ashtray with a model of a Pekingese
dog £30 - £40

267

A set of five miniature oil paintings of
Pekingese signed Kay Grey along with another
miniature, silver perpetual calendar and a
German clock £50 - £80

268

A pin dish with Pekingese design by Lucy
Dawson for Shelley £30 - £40

269

A pastel of a Pekingese dog 'Chan' signed
Truda Hope Panet 15.5.45, 50 cm x 40 cm
£30 - £50





Lot 270

270

A pencil drawing of a Pekingese dog signed bottom right, 36 cm x 29 cm £30 - £50

271

A pair of oil paintings of Pekingese dogs, 37 cm x 27 cm £40 - £60

272

A framed and glazed print of Pekingese sat on a desk with hunting picture behind, after AJ Munnings along with a copy of 'the diary of a freeman' by Black Knight, illustrated by Munnings £80 - £120

273 - 299

Spare Lots



Lot 303

300

A 19th century Chinese bronze censer, the body decorated in relief with scenes of birds and mythical beasts, the handles modelled in the form of elephant heads. The cover having a pierced cloud design, h.21 cm £200 - £300



301

An eastern copper and brass pot, the body with embossed mythical creature motifs, claw feet and carry handles, h. 23 cm, l. 35 cm £60 - £80

302

A late 19th/early 20th century full size violin together with split back together with case and bow £100 - £200

303

A late 19th/early 20th century full size violin with one piece back together with case and two bows £200 - £300



Lot 300

304

Three 19th century gilt metal portrait plaques of Van Dyke, The Duke of Wellington and St George, l. 30 cm
£100 - £150



Lot 304

305

A 19th century Kingwood inlaid glove box with quilted interior and arm length leather gloves, l. 31 cm
£30 - £50

306

An inert WWI British rifle grenade, l. 38 cm
£60 - £80

307

A late 19th/early 20th century leather desk blotter purportedly having belonged to the Countess of Warwick
£80 - £120



Lot 308

308

An early 20th century blue enamelled and gilt decorated trinket or pill box, l. 8 cm
£30 - £50

310

A Franklin Mint 'The Waterloo Chess Set'. Limited edition 55/250 Approx 58.5 cm x 58.5 cm
£300 - £500

311

A Wembley Stadium wooden seat back mounted in a display case with facsimile 1966 world cup tickets and poster etc. 83 cm x 65 cm
£40 - £60

**309**

A Franklin Mint Heroes of the North & South chess set with box and pieces. Approx 50 cm x 50 cm
£500 - £800

Lot 310



312

An early 20th century 'National Time Recorder Co. Ltd.' clocking in clock along with a folding oak card holder
£100 - £150



313

A 1950's 'Super 1000' noughts and crosses arcade machine
£80 - £120



Lot 314

314

A pair of silver and enamel Warwick Town Council 'Past Mayor' and 'Past Mayoress' medals. Hallmarked for Birmingham 1975. Approx weight 50g
£100 - £150

Lot 312

315

A WWI Victory and War medal pair named to 'LIEUT. L. S. WOODING. RAF'. Together with an RAF sweetheart brooch
£50 - £80



Lot 316 (part)

316

A large collection of early 20th century Chinese and other bond certificates, some with coupons. Together with some associated literature
£700 - £1000





Lot 317

317

A pair of Chinese grown root wood sculptures in the form of Foo Dogs, l. 62 cm, h. 48 cm £300 - £500

318

A mid 20th century Esso Gas enamel advertising sign 45 cm x 60 cm

£100 - £150



Lot 321 (part)



Lot 319

319

An early 20th century Japanese bronze sculpture of a stork on a carved wooden naturalistic base, h.35 cm

£150 - £250

320

A mid 20th century mahogany cased sextant by 'The Hezzanith Instrument Works' of London

£80 - £120

321

A collection of eight Zulu wooden pipes along with four other pipes and a set of scales

£450 - £650



Lot 322

322

Eight flags incorporating the union jack, probably from a ship
£100 - £200

223 - 249

Spare Lots

350

Steiff - 2001 promotional bear with button to ear in an air balloon with champagne and telescope, h. 80 cm
£100 - £200

351

Steiff - limited edition 01421/5000, 1996, Teddy Bear 1951, caramel, 50 cm, with certificate and box
£60 - £80

352

Steiff - 1988/1989 limited edition 01625/6000 Muzzle bear 1908, 35 cm with certificate and box along with limited edition 008252/10000 Jackie 1953 with certificate and box, and limited edition 6723/12000 Jackie 1953 with certificate and box, and one small Jackie bear
£80 - £120



353

Steiff - limited edition 02597/4000 British collectors' Teddy bear 2004 with certificate and box, with a limited edition 01834/5000 Teddy bear 1922 with certificate and box along with a collection of Steiff club magazines and catalogues *£80 - £120*

354

Steiff - limited edition 02006/5000 Teddy bear 1926 with certificate and box, limited edition 00422/1500 The Skier Teddy Bear with certificate and box, limited edition 01463/1500 The Exhibition Bear with certificate and box *£100 - £150*

355

Steiff - ten boxed bears including limited edition 01036/3000 Teddy bear ice-skater, six 7 cm club gift boxed bears and three boxed bears *£150 - £250*

356

Steiff - two unboxed bears, a limited edition 00581/3000 1912 replica Teddy Bear 406829 and a Brummbär Teddy bear *£60 - £80*

357

Steiff - limited edition 08375 1993/1994 Steiff club Teddy Clown 1928 with certificate and box along with Jongen Been No. 00357/1500 in bag and a Teddy Bu No.0962/4000 in bag *£60 - £80*

358

Steiff - eight soft toys including Mungo, Cockie, donkey and five dogs *£50 - £80*

359

Five soft toys including a Merrythought for Harrods bear, Merrythought Felix Christmas bear 2002 in box, Dowman Imports Ltd baboon, Leosco bear and a Hansa flying fox *£50 - £80*

360

Eight Cotswold Bear Co. limited edition bears, including 'Chocolate' 1/100, 'Carnaby' 100/100, 'Noodle' 1/1 and others *£100 - £150*

361

An 'Alexis Berriman' Boyds bears, a Civil war edition Boyds bear, a Teddy-Hermann limited edition 'Robert' 176/1000 and a Grisly dog (4) *£30 - £40*

362

Hansa - three large bears including grizzly bear, polar bear cub and brown bear *£100 - £150*

363

Steiff - Four soft toys including a black bear 069604, Molly jungtiger 103636, Grizzly 069345 and Oko 103889 *£60 - £100*

Lot 359 (part)

364

Steiff - Winnie the Pooh limited edition
02214/3500 2004 along with a polarfuchs
(Artic fox) 501401 *£60 - £100*

365

Steiff - Arco 062933 l. 94 cm
£50 - £80

366

Steiff - Urs 069680 l. 93 cm
£50 - £80



Lot 366



Lot 367

367

Steiff - Limited edition 00958/2008 Saint
Nicholas No. 037122 *£30 - £50*

368

Bachmann - three 00 scale locomotives, 31-279
Parallel Boller Scot 6130 'The West Yorkshire
Regiment' LMS Maroon, 32-850 Evening Star
BR green L/C BR1G Tender, 31-157 Jubilee
5684 'Jutland' LMS crimson 4000 gallon Tender
along with a 'Standard' wagon, all in original
boxes with paperwork *£100 - £200*

369

Bachmann - Four 00 scale locomotives including
31-280 P/Boiler 6106 'Gordon Highlander'
LMS crimson 4000 gal tender, 31-227 Rebuilt
Scot 46162 'Queens Westminster Rifleman BR
green, 31-278 Royal Scot 46148 'Manchester
Regiment' BR green and 31-152 4-6-0 Jubilee
class in black livery *£150 - £250*

370

Hornby - six boxed locomotives including,
R2224 LMS Fowler 2-6-4T class 4P, R2099B
LMS 4-4-0 class 2P, R2099A LMS 4-4-0 class
2P, R2182A LMS 4-6-0 Patriot class 5XP 'EC
Trench', R2052 LMS 4-6-2 'Queen Maud'
Princess Class, R2015 4-6-2- Duchess 'City of
Hereford' *£0 - £0*

371

Hornby Dublo - two boxed sets, EDP2
Passenger Train and EDG7 Tank Goods Train
£70 - £100

372 - 399

Spare Lots

*Silver, Coins
Jewellery
and Watches*



Silver, Coins Jewellery and Watches

400

A limited edition 'The Silver Map of Great Britain'. Hallmarked for London 1978, 50.5 cm x 69 cm
£80 - £120

401

A cased 'The Stamps of Royalty' silver stamp ingot set with certificates
£150 - £250

402

A pair of Edwardian silver Corinthian column candlesticks. Hallmarked for London 1907, makers mark for William Hutton & Sons, h. 15 cm
£100 - £150

403

A George V silver teapot of squat form. Hallmarked for Birmingham 1931, makers mark for William Suckling Ltd. Approx weight 426g
£150 - £200

404

A Victorian silver sugar bowl by Elkington together with an Edwardian silver pot or caddy, the lid inscribed 'Ladies Handicap July 6th 1907'. Various hallmarks. Approx weight 490g
£180 - £250

405

An Elizabeth II silver footed bowl having a pierced rim and a segmented design to body. Hallmarked for Birmingham 1955, makers mark for Adie Brothers Ltd. Approx weight 222g
£80 - £120



Lot 403



Lot 406

406

A matched pair of Victorian/Edwardian silver scallop presentation dishes engraved 'Presented To Councillor Harry & Mrs Weston. Mayor & Mayoress Of Coventry. Festival Year 1951'. Various hallmarks. Approx weight 913g, h. 13 cm
£350 - £450



407

A George V silver and glass bottomed tankard. Hallmarked for Sheffield 1933, makers mark for Viners Ltd. Approx weight 571g, h. 13 cm
£200 - £300

408

An assortment of silver items to include a baluster shaped tankard, a pair of pin tray, sauce boat etc. Various hallmarks. Approx weight 526g
£180 - £220

409

A George VI silver three piece tea set of squat form. Hallmarked for Birmingham 1938/1939, makers mark for Samuel Walton Smith. Approx weight 831g £300 - £500



Lot 409

410

A pair of Elizabeth II silver photo frames with putti design. Hallmarked for London 198, makers mark Keyford frames, h. 16 cm £60 - £80



Lot 410

411

A boxed George V silver six piece condiment set. Hallmarked for London 1916, makers mark for E S Barnsley & Co. Approx weight 134g £50 - £80

412

An extensive canteen of mainly silver cutlery to include serving spoons, table forks, spoons and knives etc. Hallmarked mostly for Sheffield 1983, makers mark Hugh Foulerton. Weighable silver approx 5853g £2400 - £2800

413

A large Victorian silver dish having a decorative border. Hallmarked for London 1858. Approx weight 895g, dia. 28 cm £380 - £450

414

An assortment of silver and white metal items to include a toast rack, bud vase, dressing mirror and brush etc. Various hallmarks. Weighable silver approx 330g £180 - £250



Lot 413



Lot 423

423

A pair of George III silver pedestal salts together with two spoons. Salts hallmarked for London 1800 & 1808, makers mark possibly William Abdy. Approx weight 170g £80 - £120

415

An Edwardian silver sugar bowl together with a George VI silver bowl. Various hallmarks. Approx weight 224g £90 - £140

416

An Edwardian silver jug of small proportions together with a George V silver christening mug with 'Man in the Moon' handle. Various hallmarks. Approx weight 155g £60 - £80

417

A selection of silver and white metal items to include a planished pin dish, compact, bowl and an unmarked sifter/shaker in the form of a barrel. Various hallmarks. Approx weight 248g £100 - £150

418

A George V silver sugar sifter of conventional form. Hallmarked for Birmingham 1910. Approx weight 113g A/F £45 - £60

419

An assortment of silver items to include two sauce boats, a napkin ring, pierced dish etc. Various hallmarks. Approx weight 436g £180 - £250

420

A George III silver tray of oval form together with an Edwardian engraved silver card tray. Various hallmarks. Approx weight 245g £100 - £150

421

Three silver cigarette cases, one having engraved scrolling decoration. Various hallmarks. Approx weight 222g £90 - £140

422

An Elizabeth II miniature silver five piece tea set. Hallmarked for Birmingham 1972, makers marks for David Hollander & Son. Approx weight 65g £50 - £80

424

A George V silver hip flask. Hallmarked for Sheffield 1919, makers mark for G & J W Hawksley. Approx weight 146g £80 - £120

425

A George IV silver fish slice with ornate pierced decoration to blade. Hallmarked for London 1829, makers mark for Clement Cheese. Approx weight 144g £70 - £100



Lot 426

426

A pair of George III silver wick trimmers. Hallmarked for London 1793, makers mark probably Wilkes Booth. Approx weight 88g £70 - £100

427

A pair of Georgian silver sugar tongs. Hallmarks rubbed. Approx weight 41g £30 - £40

428

A late 19th century Russian silver salt chair, the lift up seat with a Cyrillic inscription. Approx weight 42g, h. 4.5 cm £120 - £200



Lot 428

429

A Victorian silver Vesta case of ribbed design together with two other engraved examples. Various hallmarks. Approx weight 80g £45 - £65

430

A 19th century Chinese white metal foo dog container with green stone set eyes. Approx weight 87g, h. 6 cm

£70 - £100



431

A late Victorian silver engraved cigarette case. Hallmarked for Birmingham 1899. Approx weight 92g £40 - £60

432

An Edwardian silver sovereign holder. Hallmarked for London 1905, makers mark for A.L. Dennison. £45 - £65



Lot 433

433

A late Victorian silver mounted crocodile leather purse. Hallmarked for Birmingham 1899, makers mark L.K. 11.5 cm x 7.5 cm £70 - £100

434

A collection of hammered and early milled coinage to include Elizabeth I shillings, a William III shilling, George III sixpence, 1762 threepence etc. £200 - £300

435

A ring box containing an Edward VII half sovereign dated 1907 £140 - £180

436

A George V half sovereign dated 1911 £140 - £180

437

A George V full sovereign dated 1912 £280 - £350

438

A 2021 Queen Elizabeth II gold proof One Laurel coin with box and COA £280 - £350

Lot 438

439

A 2022 Queen Elizabeth II gold proof sovereign with boxes and COA £300 - £400

440

A set of 'The Worlds Greatest Explorers' 0.999 gold miniature coins. £180 - £220

441

An assortment of boxed Christofle silver plated cutlery to include table forks, dinner knives, serving spoons, fish forks etc. £100 - £200



Lot 434

442 - 499

Spare Lots

500

An 18ct gold three stone old cut diamond ring, the central stone approximately 0.3ct.

Approx weight 7.1g. Size V

£250 - £350



Lot 501

501

A continental yellow metal wedding band.

Approx weight 8g. Size Q 1/2

£240 - £280



Lot 502 (two images)

502

A 950 platinum and diamond engagement ring, the approximately 1.01ct central cushion cut stone in a diamond encrusted mount. Approx weight 5g. Size L 1/2

£1000 - £1500

503

An early 20th century 18ct gold five stone diamond ring together with an early 20th century yellow metal and diamond cluster ring marked '18ct plat' and a 22ct and platinum band.

Approx weight 6.7g

£150 - £200

504

A group of four 9ct gold rings. Approx weight 6.8g

£80 - £120

505

A double strand cultured pearl necklace having a 9ct gold floral design clasp, l. 72 cm

£100 - £200



Lot 505



Lot 509

506

A single strand cultured pearl necklace having a yellow metal floral design clasp marked '14k', l. 80 cm

£100 - £200

507

A 9ct gold six bar gate link bracelet together with a 9ct gold cross. Approx weight 13.5g

£160 - £200



508

A 9ct gold fringe necklace. Approx weight 19.1g. l. 42 cm

£250 - £350

509

An 18ct white gold diamond set cross suspended from a matching chain. Approx weight 3.8g

£100 - £150

510

A yellow metal, sapphire and diamond ring marked '585'. Approx weight 3.3g. Size J 1/2 £70 - £100



Lot 511

511

A Queen Victoria full sovereign dated 1887 and set in a yellow metal filigree mount marked '18kt'. Approx weight 10.3g £280 - £350



Lot 512

512

A Queen Victoria full sovereign dated 1900 set in a 9ct gold mount on a yellow metal figaro chain. Approx weight 12g £300 - £400

513

An assortment of yellow metal jewellery to include Etruscan style crosses, ring, earrings etc. Approx weight 17.5g £300 - £400



Lot 513

514

Two yellow metal brooches together with a yellow metal charm bracelet. Approx weight 16.2g £160 - £250

515

An 18ct gold, emerald and diamond cluster ring together with a 9ct gold engraved band, a 9ct gold bracelet and a yellow metal locket marked '9ct BK&FT'. Approx weights 3.6g & 9.1g £200 - £300

516

A group of four 9ct gold rings to include a triple row diamond ring, a sapphire cluster ring and a rose gold signet ring etc. Approx weight 7.6g £90 - £140

517

A yellow metal and turquoise dress ring. Approx weight 4.6g. Size O £80 - £120

518

A platinum and diamond full eternity ring having nineteen round brilliant cut stones. Total carat weight approximately 3ct. Approx weight 8.8g. Size M £1000 - £1500

519

Two 22ct gold wedding bands. Approx weight 12.3g. Size N £350 - £450



Lot 518

520

A 22ct gold wedding band. Approx weight 9g.
Size O £260 - £320



Lot 521

521

An 18ct gold seven stone diamond ring. Total carat weight approximately 0.5ct. Approx weight 3.4g. Size R £200 - £300

522

A group of four gold and yellow metal rings to include a signet ring, an engraved ruby band ring, red stone dress ring etc. Approx weight 14.4g £250 - £350



Lot 523

523

An early 20th century 18ct gold and diamond gypsy style ring set with three graduating old cut stones. Total carat weight approximately 0.3ct. Approx weight 3.9g. Size R £200 - £300

524

A Victorian yellow metal, emerald and diamond ring. The five main stones bordered by small diamonds. Approx weight 6g. Size P £500 - £800



Lot 524

525

A yellow metal and diamond solitaire ring marked '18ct'. The round brilliant cut stone approximately 0.5ct. Approx weight 2.2g. Size N £300 - £400



Lot 525

526

A late Victorian yellow metal, turquoise and diamond cluster ring marked '18ct', together with a 9ct gold and turquoise cluster ring and one other. Approx weights 3.8g & 5.7g. £180 - £250

527

An early 20th century 18ct gold and diamond band ring. Approx weight 2.7g. Size J £70 - £100



Lot 528

528

A yellow metal and diamond ring set with baguette and round cut stones. Marked '14kt'. Approx weight 7g. Size R £200 - £300

529

A yellow metal band engraved 'amor vincit omnia'. Approx weight 5g. Size Q £60 - £80

530

A 19th century yellow metal mounted carnelian seal being later converted to a ring together with one similar signet ring. Approx weight 12g £180 - £250

531

A 9ct gold, platinum and opal solitaire ring together with 9ct gold and garnet cluster ring and one other red stone ring marked '9ct'. Approx weight 8.2g £100 - £150



Lot 532

532

A 9ct gold and diamond ring, the stones in stylized leaf setting. Approx weight 3.5g. Size J 1/2 £150 - £200



533

A Victorian yellow metal and turquoise brooch in the form of a snake. Approx weight 5.7g, w. 4 cm

£100 - £200

535

An 18ct gold and kunzite pendant on a 9ct gold 'S' link chain. Approx weight 15g

£180 - £250

536

A Chinese 9ct gold and jade panel bracelet. Approx weight 10.8g, l. 19 cm

£50 - £80



Lot 535



Lot 534



Lot 539

534

A 9ct rose gold graduating double albert chain. Marked on every link. Approx weight 41.3g

£500 - £800

537

A Victorian yellow metal chain with octagonal links. Approx weight 46.8g, l. 47 cm

£500 - £800

538

A late Victorian silver double albert chain with fob. Approx weight 71g, l. 42 cm

£40 - £60

539

A Victorian yellow metal fancy link double albert chain marked '9c'. Approx weight 37.4g, l. 43 cm

£480 - £600

Lot 537



540

A Victorian yellow metal albertina with tassels. Marked '9ct'. Approx weight 18.5g, l. 28 cm £250 - £350

Lot 540



Lot 543

543

A yellow metal, emerald and diamond cluster ring, the approximately 1ct rectangular cut emerald surrounded by twelve round brilliant cut diamonds totaling approximately 0.52ct. Approx weight 4.6g. Size Q £1000 - £1500



544

A pair of yellow metal, emerald and diamond drop earrings of rectangular form. Each central diamond surrounded by square cut emeralds totaling approximately 0.9ct. Approx weight 3.6g £300 - £400



541

A 9ct gold two bar gate link bracelet with heart padlock clasp. Approx weight 19g £240 - £280

542

A silver charm bracelet with a variety of charms. Approx weight 81.4g £40 - £60

545

A 9ct gold, ruby and diamond necklace, the five oval cut stones interspersed with small diamonds. Approx weight 4.6g, l. 44 cm £70 - £100

546

A 9ct white gold, peridot and diamond cluster pendant on matching chain. Approx weight 1.3g £50 - £80

547

An assortment of mainly 9ct gold and amethyst jewellery to include pendants and earrings together with a silver and amethyst tennis bracelet etc. Approx weights 15.9g & 16.2g £200 - £300

548

An assortment of mainly 9ct gold jewellery to include chains, bracelet, pendants, scarf ring, brooch etc. Approx weight 31.3g £400 - £600

549

A selection of 9ct gold and yellow metal jewellery to include an RAF sweetheart brooch, earrings and a three stone diamond ring marked '18ct & Plat'. Approx weight 15.2g £150 - £250



Lot 550

550

A George V full sovereign dated 1913 in a yellow metal brooch mount. Approx weight 11.8g A/F £280 - £350



Lot 557

557

A Victorian yellow metal, blue paste and seed pearl bar brooch. Approx weight 5.1g £50 - £80



Lot 558

551

A 9ct gold band together with a 9ct gold belcher chain and a 9ct gold cross on chain. Approx weight 18.1g £220 - £280

552

Two 9ct gold locket on chains together with a 9ct gold rope twist chain. Approx weight 20.5g £250 - £350

553

Three early 20th century yellow metal pendants. Approx weight 6.8g A/F £50 - £80

554

Three 9ct gold and yellow metal dress rings together with a 9ct gold and onyx bracelet. Approx weight 24.3g £200 - £300

555

An 18ct gold, diamond and ruby set brooch by Kutchinsky. Approx weight 36.6g £1500 - £2000

558

A white metal and diamond crossover ring marked 'Plat', the three round brilliant cut stones totaling approximately 0.7ct. Approx weight 4.4g. Size N £300 - £500

**556**

A group of five 9ct gold, yellow metal and white metal rings to include a garnet dress ring, a pearl cluster ring and a faceted band marked 'platinum'. Approx weight 15.3g £150 - £200



Lot 559

559

A yellow metal and diamond solitaire ring, the central round brilliant cut stone approximately 0.4ct. Approx weight 2.5g. Size O £150 - £250

560

An 18ct gold, opal and diamond cluster ring. Approx weight 4.8g. Size M £200 - £300



Lot 560

561

An 18ct gold, aquamarine and diamond cluster ring. Approx weight 4.4g. Size N £200 - £300



Lot 561

562

Two strings of jade beads £30 - £50

563

Three strings of faceted cherry amber bakelite beads £30 - £50

564

Two strings of amber beads together with one loose bead £60 - £80

565

A large quantity of mainly pearl necklaces £100 - £200

566

A large white metal mounted, pearl and multi-stone bracelet. Approx weight 149g, l, 18 cm £80 - £120



567

A double strand cultured pearl necklace having a 9ct gold clasp together with a matching bracelet and two sets of pearl earrings £200 - £300

568

An 18ct gold and diamond pendant, the central pear cut stone approximately 0.75ct. Total diamond weight approximately 1ct £1000 - £1500



Lot 568



Lot 569

569

An 18ct gold, sapphire and diamond cluster ring. Approx weight 3.7g. Size L £200 - £300

570

An 18ct gold and pear cut diamond solitaire ring, the stone approximately 0.5ct. Approx weight 2.5g. Size J. £500 - £800



Lot 570



Lot 570A

570A

A 14 ct gold emerald and diamond ring size J along a pair of matching emerald earrings
£300 - £400



Lot 571

571

An early 20th century 9ct rose gold, diamond and ruby bracelet having a hinged panel to top. Approx weight 9g
£150 - £250



Lot 572

572

A 9ct gold slave bangle with engine turned decoration. Approx weight 8.2g, dia. 7.5 cm
£100 - £150

573

An Etruscan style yellow metal and green stone set cross. Approx weight 11.9g
£180 - £250



Lot 573

574

A 9ct gold rope twist chain. Approx weight 12.3g
£160 - £220



Lot 576

575

A yellow metal Turkish coin pendant. Approx weight 1.9g
£70 - £100

576

An early 20th century yellow metal gate link bracelet marked '9c'. Approx weight 17g
£200 - £300

577

A late 19th century yellow metal locket with monogrammed front, suspended from a turquoise set pin. Approx weight 24.3g
£250 - £350



Lot 577



578

A set of graduating cherry amber bakelite beads. Approx weight 82g, l. 62 cm

£150 - £250

579

A set of faceted graduating cherry amber bakelite beads. Approx weight 39g, l. 75 cm

£50 - £80

580

A set of faceted cognac coloured amber beads. Approx weight 60g, l. 88 cm

£70 - £100



581

A gentleman's Omega Seamaster Professional 300m/1000ft (Ref:22645000). Circa 1998. Boxed with papers. Apparently new old stock, still with original packaging and tag.

£1000 - £1500



582

A gentleman's stainless steel Universal Geneve manual winding wristwatch, the dial with baton markers and seconds sub-dial

£140 - £180



583

A gentleman's 9ct gold cased Rotary quartz wristwatch on a yellow metal strap marked '14k'. Approx weight 59g

£900 - £1200

584

A gentleman's 9ct gold cased manual winding wristwatch with silvered dial.

£70 - £100

585

An assortment of ladies 9ct gold and yellow metal wristwatches, some with 9ct gold straps. *£400 - £600*

586

A yellow metal ladies Omega Geneve wristwatch with segmented dial. *£60 - £80*

587

An early 20th century ladies yellow metal wristwatch *£60 - £80*

588

A ladies 9ct gold Rotary wristwatch on a 9ct gold strap. Approx weight 14.7g *£140 - £180*

589

A ladies 9ct gold cased Rotary wristwatch together with one other ladies yellow metal wristwatch on an expanding strap. *£200 - £300*

590

A ladies 18ct gold Omega wristwatch on an integral strap. Approx weight 27.3g *£700 - £800*

591

An early 20th century ladies 9ct gold Rolex wristwatch *£60 - £80*

592

An early 20th century ladies 9ct gold cased Omega wristwatch on a 9ct gold strap. Approx weight 21g *£100 - £150*

593

An early 20th century ladies yellow metal Rolex half hunter wristwatch, the case marked 'K18'. *£100 - £150*

594

An early 20th century ladies 9ct gold cased fob watch on a removable wristwatch converter strap *£70 - £100*

595

A ladies yellow metal fob watch marked '14k', suspended from a 9ct gold hanger. Approx weight 28g *£150 - £250*

596

A ladies 18ct gold fob watch having a yellow metal dial with Roman numerals. Approx weight 35.7g *£250 - £400*

597

An early 20th century ladies yellow metal engraved half hunter fob watch marked '18k'. Approx weight 35.7g *£200 - £300*



Lot 590



Lot 596



Lot 597



Lot 598

600

A George III silver verge fusee pair cased pocket watch, the movement signed 'Goldsmith London'. Hallmarked for Birmingham 1808, dia. 5.5 cm *£100 - £150*



Lot 601

598

A ladies yellow metal open face fob watch marked '18k'. Approx weight 42.8g *£300 - £500*

601

A 19th century gilt metal verge fusee pair cased pocket watch having a Turkish style dial, dia. 5.9 cm. Together with a selection of keys *£60 - £80*

602

A Victorian silver center seconds pocket chronograph. Hallmarked for Chester 1881, dia. 5.3 cm *£60 - £80*



Lot 599

599

An early 20th century ladies 9ct gold engraved fob watch. Approx weight 31.6g *£70 - £100*



Wines and Spirits

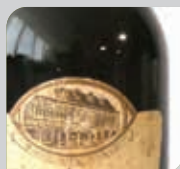
TO BE SOLD BY LIVE AUCTION

Friday 8th April 2022

Commencing at 11.00am

Viewing: Friday Prior 9am - 5pm, Saturday Prior 9am - 1pm, Morning of sale from 9am

ENTRIES NOW INVITED FOR NEXT SALE



W&H PEACOCK

AUCTIONEERS & VALUERS

Bedford Auction Centre

Eastcotts Park, Wallis Way, Bedford, Bedfordshire MK42 0PE

01234 266 366 or wine@peacockauction.co.uk

www.peacockauction.co.uk

ENTRIES NOW INVITED

For our next specialist auction of
Antiques and Collectable's at the
Leamington Spa Auction Centre

Recent Highlights



Hammer Price £1,800



Hammer Price £1,000



Hammer Price £850

Terms used in this catalogue
have the following meanings.

Please note that all statements in
this catalogue, regarding authorship,
attribution, origin, date, age,
provenance and condition are
statements of opinion and are not
treated as a statement of fact.

1. A N ARTIST

In our opinion, the work is by the
artist.

2. ATTRIBUTED TO A N ARTIST

In our opinion, the work is of the
period of the artist which may be
whole or in part the work of the
artist.

3. STUDIO, (CIRCLE OR WORKSHOP) OF A N ARTIST

In our opinion, the work is of the
period and closely relates to his
style.

4. SCHOOL OF A N ARTIST

In our opinion, the work is by a
pupil or a follower of the artist.

5. MANNER OF A N ARTIST

In our opinion, the work is in the
style of the artist and is of a later
period.

6. AFTER A N ARTIST

In our opinion, this work is a copy
of the artist.

7. ASCRIBED TO A N ARTIST

In our opinion, this work is not
by the artist, however, previous
scholarship has noted this to be a
work by the artist.

8. SIGNED (OR DATED)

The work has a signature (or date)
which is in our opinion is genuine.

9. BEARS SIGNATURE (OR DATE)

The work has a signature (or
date) which in our opinion is not
authentic.